



PAGE : ONE



TITLE:
IT'S PROBABLY TIME

CLIENT:
CAREERBUILDER ON-LINE

PROJECT # 001

CONTEST
DATE: FEBRUARY 2009

DIRECTOR:
ROBERT A. BRUBAKER

PRODUCER:
ROBERT A. BRUBAKER

SFX SUPERVISOR:
ROBERT A. BRUBAKER

STORY BOARD ARTIST:
ROBERT A. BRUBAKER



SHOT DESCRIPTION

INT. FRONT OFFICE DESK - DAY

BOSS MAN smirks to himself as he tears a "pink slip" in two.
A BLOND FEMALE EMPLOYEE un-assuredly smiles as an obviously
unhappy LAID OFF EMPLOYEE is marched to the door.

NARRATOR (V.O.)
There could be a lot of reasons to
stay at your job.

SCRIPT PG.# 1
SHOT # 001

SCRIPT PG.# 1
SHOT# 002

FRAME COUNT _____
OF _____

ANIMATION
PLATE #
ELEMENTS

FRAME COUNT _____
OF _____

ANIMATION
PLATE #
ELEMENTS

SHOT DESCRIPTION

INT. BEDROOM - DAY

TWIN in PAJAMAS holds onto bed frame for dear life as his
TWIN in a SUIT wrestles to pull PAJAMA TWIN out to the hall.

NARRATOR (V.O.)
But if you fight yourself going to
work everyday...

NOTE FIELD:

Twins used for this segment.

RESONANT IMAGE STUDIOS



PAGE : TWO



TITLE:
IT'S PROBABLY TIME
CLIENT:
CAREERBUILDER ON-LINE
PROJECT # 001
CONTEST
DATE: FEBRUARY 2009

DIRECTOR:
ROBERT A. BRUBAKER
PRODUCER:
ROBERT A BRUBAKER
SFX SUPERVISOR:
ROBERT A BRUBAKER
STORY BOARD ARTIST:
ROBERT A BRUBAKER



SHOT DESCRIPTION

EXT. HOUSE DOOR - DAY

PAJAMA-TWIN desperately holds onto a closed door as
SUIT-TWIN plays "tug-of-war" with PAJAMA-TWINS feet.

PAJAMA TWIN
No I don't want to go!

SCRIPT PG.# 1
SHOT # 002A

SCRIPT PG.# 1
SHOT# 003

FRAME COUNT _____
OF _____

ANIMATION
PLATE #
ELEMENTS

FRAME COUNT _____
OF _____

ANIMATION
BACKGROUND PLATE
#0AA
LIVE ACTION OFFICE
GREEN SCREEN
ACTOR

SHOT DESCRIPTION

INT. OFFICE DESKTOP - DAY

A TINY EMPLOYEE stands next to a resume' and computer keyboard
trying to get the attention of an unseen giant boss, only to
get smashed under the weight of a sandwich.

NARRATOR (V.O.)
You're always overlooked over for a
promotion...

Twins used for this segment.

NOTE FIELD:

RESONANT IMAGE STUDIOS



PAGE : THREE



TITLE:
IT'S PROBABLY TIME
CLIENT:
CAREERBUILDER ON-LINE
PROJECT # 001
CONTEST
DATE: FEBRUARY 2009

DIRECTOR:
ROBERT A. BRUBAKER

PRODUCER:
ROBERT A BRUBAKER

SFX SUPERVISOR:
ROBERT A BRUBAKER

STORY BOARD ARTIST:
ROBERT A BRUBAKER



SHOT DESCRIPTION

INT. GROUP OF OFFICE CUBICLES - DAY

A FEMALE EMPLOYEE marks on a PINK POST-IT then slaps it behind the cubicle and walks off. An EMPLOYEE COVERED IN YELLOW POST-ITS and one pink POST-IT peers out around the corner.

NARRATOR (V.O.)
Your co-workers take advantage of you.

POST IT NOTE EMPLOYEE
I got that already!

SCRIPT PG.# 1
SHOT # 004

SCRIPT PG.# 1
SHOT# 005

FRAME COUNT _____
OF _____

FRAME COUNT _____
OF _____

ANIMATION
PLATE #
ELEMENTS

ANIMATION
BACKGROUND PLATE
#00B
BEACH
ANIMATED SKELETON
&
GREEN SCREEN
ACTOR

SHOT DESCRIPTION

EXT. BEACH MODEL SHOOT - DAY

A SKELETAL MODEL in a bikini blows a kiss to a PHOTOGRAPHER then falls apart on the beach.

NARRATOR (V.O.)
You feel worked to the bone...

Use additional actors in back ground. Have "POST ITS" ready as a costume , then place extra post it notes around area .

NOTE FIELD:

RESONANT IMAGE STUDIOS



PAGE : FOUR



TITLE:
IT'S PROBABLY TIME
CLIENT:
CAREERBUILDER ON-LINE
PROJECT # 001
CONTEST
DATE: FEBRUARY 2009

DIRECTOR:
ROBERT A. BRUBAKER
PRODUCER:
ROBERT A BRUBAKER
SFX SUPERVISOR:
ROBERT A BRUBAKER
STORY BOARD ARTIST:
ROBERT A BRUBAKER



SHOT DESCRIPTION

EXT. CITY OFFICE BUILDING - DAY

A FEMALE EMPLOYEE is seen carrying tons of stuff. Everything from an automobile and telecommunications satellite to a filing cabinet and office equipment. The load begins to shift.

NARRATOR (V.O.)
You do more than your share of the workload...

SCRIPT PG.# _2_
SHOT # _006_

FRAME COUNT _____
OF _____

BACKGROUND
PLATE # 00C
WOMEN REACTING TO
EMPLOYEE BALANC-
ING LOTS OF STUFF
ANIMATED STUFF

SCRIPT PG.# _2_
SHOT# _007_

FRAME COUNT _____
OF _____

SHOT DESCRIPTION

INT. KITCHEN - DAY

A MALE PEST CONTROL DUDE and INSECT scream at each other.

NARRATOR (V.O.)
You're constantly screaming...

Use additional actors in back ground.

NOTE FIELD:

PROPS: Can of bug spray and hat with logo.

RESONANT IMAGE STUDIOS



PAGE : FIVE



TITLE:
IT'S PROBABLY TIME
CLIENT:
CAREERBUILDER ON-LINE
PROJECT # 001
CONTEST
DATE: FEBRUARY 2009

DIRECTOR:
ROBERT A. BRUBAKER

PRODUCER:
ROBERT A BRUBAKER

SFX SUPERVISOR:
ROBERT A BRUBAKER

STORY BOARD ARTIST:
ROBERT A BRUBAKER



SHOT DESCRIPTION

INT. KITCHEN - DAY (REVERSE ANGLE ON INSECT)

...and INSECT scream at each other.

SCRIPT PG.# _2_
SHOT # _007b_

SCRIPT PG.# _2_
SHOT# _008_

FRAME COUNT _____
OF _____

FRAME COUNT _____
OF _____

ANIMATION
BACKGROUND PLATE
#00D
KITCHEN
ANIMATED INSECT

SHOT DESCRIPTION

INT. OFFICE BUILDING HALLWAY - DAY

The BOSS dangles the word "BONUS" at the end of a stick while riding an EMPLOYEE "piggyback" style.

NARRATOR (V.O.)
Your boss is on your back...

NOTE FIELD:

PROPS: Stick with the word BONUS on string.

RESONANT IMAGE STUDIOS



PAGE : SIX



TITLE:
IT'S PROBABLY TIME
CLIENT:
CAREERBUILDER ON-LINE
PROJECT # 001
CONTEST
DATE: FEBRUARY 2009

DIRECTOR:
ROBERT A. BRUBAKER
PRODUCER:
ROBERT A BRUBAKER
SFX SUPERVISOR:
ROBERT A BRUBAKER
STORY BOARD ARTIST:
ROBERT A BRUBAKER



SHOT DESCRIPTION

INT. MAGICIAN STAGE - DAY

A MAGICIAN waves his wand over a hat only to have a WHITE RABBIT pop out with a sign that says "ON-STRIKE".

NARRATOR (V.O.)
The Magic has disappeared...

SCRIPT PG.# _2_
SHOT # _009_

SCRIPT PG.# _2_
SHOT# _010_

FRAME COUNT _____
OF _____

FRAME COUNT _____
OF _____

BACKGROUND PLATE
#00E
Photoshop Ship with
Careerbuilder logo on the
side.
GREEN SCREEN
ACTOR
superimpose graphics.

SHOT DESCRIPTION

EXT. CRUISE LINE OFFICE - DAY

A FEMALE VACATIONER cries after hearing that her boss has canceled her vacation.

NARRATOR (V.O.)
Your vacation's been canceled...

PROPS: Magician hat and bunny puppet with sign that says "ON STRIKE." Spray silly string at Magician -off screen.

NOTE FIELD:

Superimpose "VACATION CANCELLED"

RESONANT IMAGE STUDIOS



PAGE : SEVEN



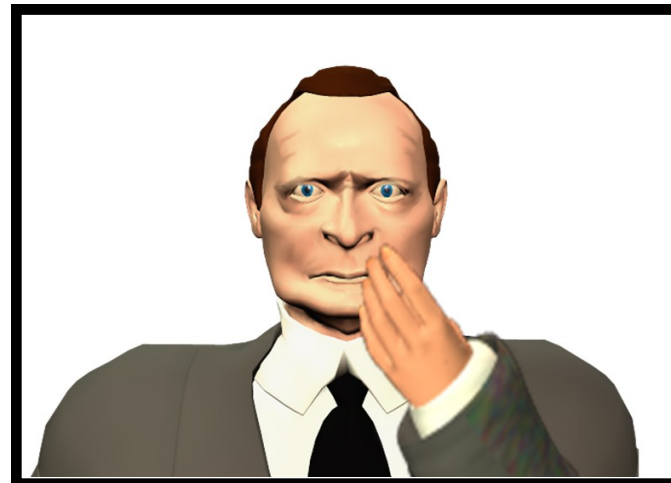
TITLE:
IT'S PROBABLY TIME
CLIENT:
CAREERBUILDER ON-LINE
PROJECT # 001
CONTEST
DATE: FEBRUARY 2009

DIRECTOR:
ROBERT A. BRUBAKER

PRODUCER:
ROBERT A BRUBAKER

SFX SUPERVISOR:
ROBERT A BRUBAKER

STORY BOARD ARTIST:
ROBERT A BRUBAKER



SHOT DESCRIPTION

INT. TRUCK STOP OFFICE - DAY

A TRUCKER blows a kiss toward the camera.

NARRATOR (V.O.)
You work with this guy...

SCRIPT PG.# _2_
SHOT # _011_

FRAME COUNT _____
OF _____

SCRIPT PG.# _2_
SHOT# _012_

FRAME COUNT _____
OF _____

SHOT DESCRIPTION

INT. FLOWER SHOP OFFICE - DAY

Some OLD GUY sniffs at his own sweaty fingers.

NARRATOR (V.O.)
...or this guy...

NOTE FIELD:

RESONANT IMAGE STUDIOS



PAGE : EIGHT



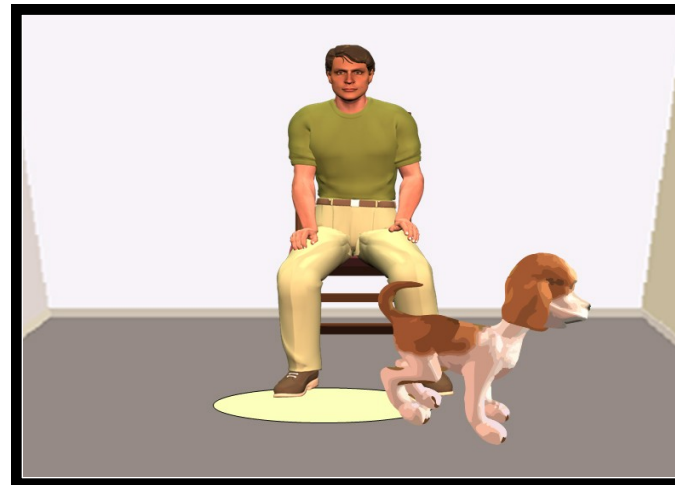
TITLE:
IT'S PROBABLY TIME
CLIENT:
CAREERBUILDER ON-LINE
PROJECT # 001
CONTEST
DATE: FEBRUARY 2009

DIRECTOR:
ROBERT A. BRUBAKER

PRODUCER:
ROBERT A BRUBAKER

SFX SUPERVISOR:
ROBERT A BRUBAKER

STORY BOARD ARTIST:
ROBERT A BRUBAKER



SHOT DESCRIPTION

INT. MAIL ROOM - DAY

The BOSS moves from screen right, bull horns something unintelligible. The WORKER jumps through the ceiling tile, feet dangling in air.

NARRATOR (V.O.)
You're bullied into doing overtime...

SCRIPT PG.#_3_
SHOT #_011_

SCRIPT PG.#_3_
SHOT#_012_

FRAME COUNT_____
OF_____

ANIMATION
BACKGROUND PLATE
#00F
MAILROOM
REPLACE LIVE ACTOR
with an mated vers ion going
through ceiling

FRAME COUNT_____
OF_____

FOREGROUND PLATE
#00G
Photoshop puddle
USE TRAINED PUPPY to
LIFT LEG ON CUE!

SHOT DESCRIPTION

INT. WAITING ROOM - DAY

An EMPLOYEE stairs out to space as his own dog lifts a leg, pees, then walks away.

NARRATOR (V.O.)
Your best friend is telling you to
take a hike...

Have the BOSS use a bullhorn while entering from around the corner of the entryway.

NOTE FIELD:

RESONANT IMAGE STUDIOS



PAGE : NINE



TITLE:
IT'S PROBABLY TIME
CLIENT:
CAREERBUILDER ON-LINE
PROJECT # 001
CONTEST
DATE: FEBRUARY 2009

DIRECTOR:
ROBERT A. BRUBAKER
PRODUCER:
ROBERT A BRUBAKER
SFX SUPERVISOR:
ROBERT A BRUBAKER
STORY BOARD ARTIST:
ROBERT A BRUBAKER



SHOT DESCRIPTION

INT. ASSISTANT MANAGER'S OFFICE - DAY

The BLOND FEMALE EMPLOYEE (from the first scene) sits in front of a giant pile of paperwork, shaking her head with exhaustion just as a mouse scoots across her desk.

NARRATOR (V.O.)
...and the reasons to leave your job
are suddenly piled this high?

SCRIPT PG.#_3_
SHOT#_011_

SCRIPT PG.#_3_
SHOT#_012_

FRAME COUNT_____
OF_____

BACKGROUND PLATE
#00H
Photoshop stacks of paper
GREEN SCREEN
ACTOR IN OFFICE
Pull a puppetmouse through
the scene.

FRAME COUNT_____
OF_____

ANIMATION
BACKGROUND PLATE
#00I
An imated c lock and words

SHOT DESCRIPTION

INT. EFFECTS SHOT OF ANIMATED CLOCK

A CLOCK that has the words "CAREER", for the minute hand
"BUILDER" for the hour hand, ticks away to a quarter of 3:00.

NARRATOR (V.O.)
...It's probably time, to start
building.

Use addit ional actors in back ground.

NOTE FIELD:

Have the words "Start building" fly in from screen right.

RESONANT IMAGE STUDIOS



PAGE : TEN



TITLE:
IT'S PROBABLY TIME
CLIENT:
CAREERBUILDER ON-LINE
PROJECT # 001
CONTEST
DATE: FEBRUARY 2009

DIRECTOR:
ROBERT A. BRUBAKER
PRODUCER:
ROBERT A BRUBAKER
SFX SUPERVISOR:
ROBERT A BRUBAKER
STORY BOARD ARTIST:
ROBERT A BRUBAKER

THE END

SHOT DESCRIPTION

INT. ELEVATOR WAITING AREA - DAY

The BLOND FEMALE EMPLOYEE races toward an open elevator door where a CLOCK MAN is about enter.

BLOND FEMALE EMPLOYEE
Wait a minute... You're not going
anywhere.

Determined not to let time get away, The BLOND FEMALE EMPLOYEE leaps at CLOCK MAN grabs one of his feet and HOLDS ON "for dear life". Desperate to get away, CLOCK MAN drags her along.

SCRIPT PG.# _ 3 _
SHOT # _ 011 _

SCRIPT PG.# _ 3 _
SHOT# _ 012 _

FRAME COUNT _____
_____ OF _____

FRAME COUNT _____
_____ OF _____

ANIMATION
FOREGROUND PLATE
#00J
ANIMATED CLOCK
SUPERED OVER ACTOR

SHOT DESCRIPTION

FADE OUT:

NOTE FIELD:

RESONANT IMAGE STUDIOS